



QUICK SETUP GUIDE

MTN Fixed LTE-A

Quick Setup Guide

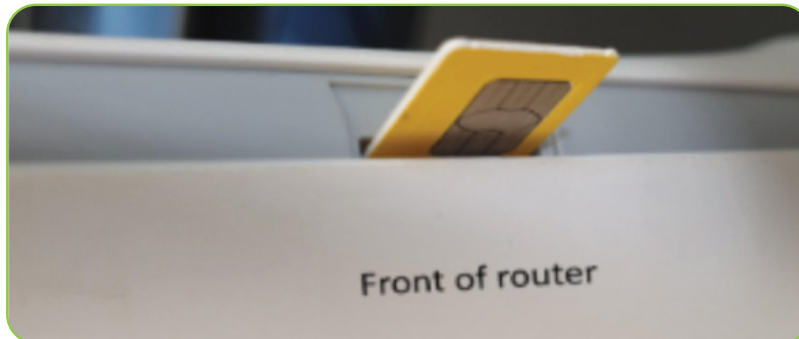
Congratulations on your new Fixed LTE-A service from Vox (powered by MTN).

Please follow these simple SIM activation steps to get connected using the MTN Prepaid SIM card and ZTE MF296C router.

IMPORTANT NOTE: If you already own an MTN-approved router, please create a new APN profile as outlined on page 2 of this guide before activating your SIM card. Approved LTE routers include the ZTE MF286C, ZTE 296C and Huawei models B618, B612, B618, B525 and B2368. Approved 5G routers include the ZTE G5C and the ZTE MC888D. Please note that this list is regularly updated so please contact us for an updated list if needed.

1

Insert your standard SIM card into the slot located on the side of the router. Click the SIM into the slot, making sure the gold chip faces out towards the front of the router.



2

Power up the router.

3

You should see the 3G/4G light on the front panel glow **red**, then **green** and finally **blue**. This process can take up to 24 hours, so please be patient.



The blue 3G/4G light indicates you have connected to the Internet.



Last Step

To log into the router, connect to the router's Wi-Fi network (SSID) using the WLAN KEY (password) indicated on the sticker under the device, and then from your PC, laptop or mobile phone, connect to the router from a browser at <http://192.168.0.1> using the password shown on your router's sticker. See example sticker below.



APN Profile

If you already own an MTN-approved router, you will need to create a new APN profile with the Vox APN settings, as follows:

APN: ws.vox.fwa

Current APN	Vox Fixed LTE
Mode	<input checked="" type="radio"/> Auto <input type="radio"/> Manual
Profile	Vox Fixed LTE
PDP Type	IPv4
Profile Name *	Vox Fixed LTE
APN *	ws.vox.fwa
Authentication	NONE
User Name	
Password	

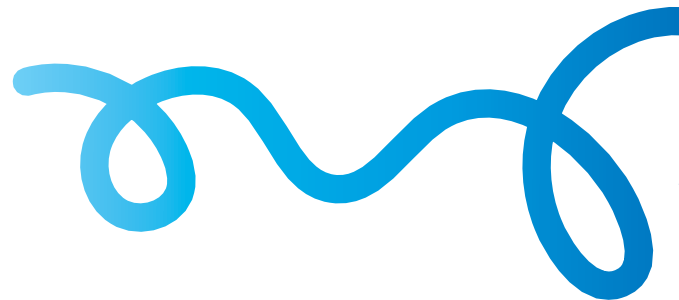
Save the new profile as the default and then proceed with the SIM activation steps as per page 1 of this guide. Please note that the images provided are of the ZTE MF286C router. Other router models may differ.

Should you experience any problems, please contact our customer support desk for assistance.

Need Help?

Business Support : +27 (0) 87 805 0500

Email: help@voxtelcom.co.za



For more information on complementary or alternative products, visit us at vox.co.za

New Business Sales JHB : +27 (0) 87 805 5050
Consumer Support : +27 (0) 87 805 0530
Business Support : +27 (0) 87 805 0500
Email: info@voxtelcom.co.za

